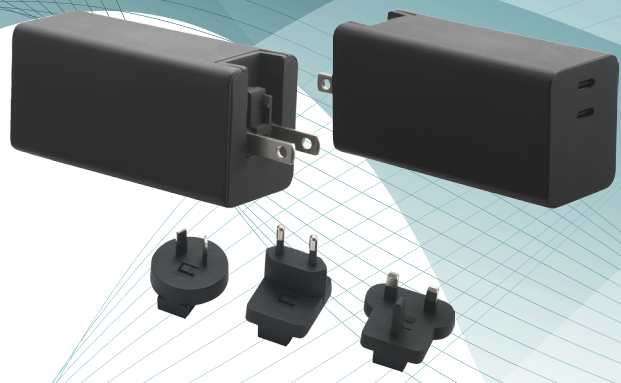




I.T.E.
Medical



Dual USB Type-C P.D. 100 Watt GaN Series

Wall Mount Type
USA / Japan / Taiwan / AC Plug Changeable

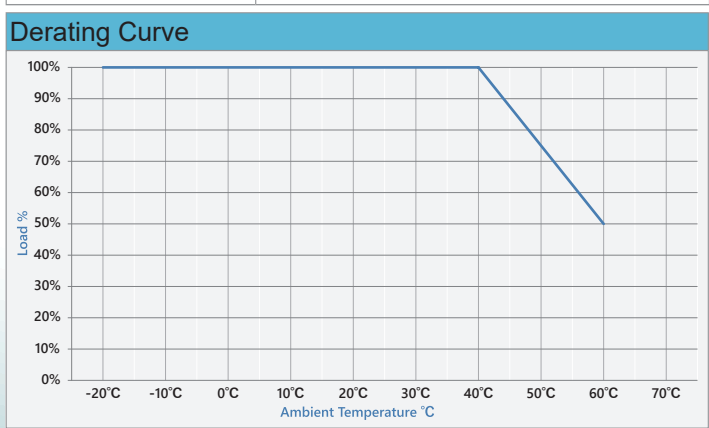
ATN100A3 - W200

U : US Plug / Changeable Plug
V : Changeable Plug

- Features :**
- IEC/EN/ANSI/AAMI ES60601-1 (Edition 3.2)
 - EMC : IEC60601-1-2 (Edition 4.1)
 - IEC/EN/UL 62368-1 3rd Edition
 - Means of Protection : 2 X MOPP
 - 100-240VAC Universal Input
 - P.D. 3.0 / QC 4.0+ / QC 4.0
 - Regulated Output With Low Ripple Noise
 - Safety Agency Requirements and EMI/EMS Certified
 - Modified and Custom Design Available
 - 2 Years Warranty

Model	O/P Voltage	O/P Current	Watt
ATN100A3-W200 <input type="checkbox"/>	5.0V	3.00A	15W
	9.0V	3.00A	27W
	12.0V	3.00A	36W
	15.0V	3.00A	45W
	20.0V	5.00A	100W

Input	
Voltage	100-240VAC
Line Frequency	50-60Hz
Current	1.3A-0.5A
Protection	Internal Primary Current Fuse
Configuration	U for US Plug / V for Changeable Plug



Output	
Load Regulation	±5% (Typical)
Ripple & Noise	≤ 100m Vp-p @ Full Load
Transient (Dynamic) Response	0.5mS with 50% Load Change
Start-up Time	< 3,000mS
Hold-up Time	≥ 10mS @ Full Load
Rise Time	< 50mS
Protection	Short Circuit Protection / Over Voltage Protection / Over Current Protection

Electrical	
Topology	LLC
Dielectric Withstand	4,000VAC Primary - Secondary
Touch Current (Patient) Leakage Current	< 100µA
Efficiency	Meet DoE Level VI, ErP Stage 2, CoC Tier 2
EMC Standards	EN55011
	EN61000-3-2,3
	EN61000-4-2,3,4,5,6,8,11
MTBF	300,000 Calculated Hours at 25°C , by Telcordia SR-332

Environmental	
Operating Temperature	-20 to + 40°C
Storage Temperature	-20 to + 80°C
Operating Altitude	5,000M
Relative Humidity	Operating : 20 to 80% RH
	Storage : 10 to 90% RH
Cooling	Natural Convection Cooling

Mechanical	
Case Dimension	L 44 × W 35 × H 87 (mm)
Weight	230g (Ref.)

