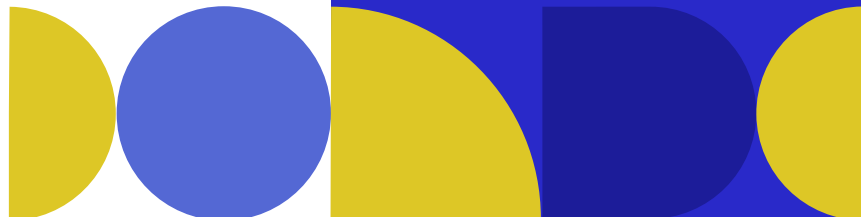


2025 カタログ 新製品紹介



Adapter Technology Co., Ltd.



25年カタログ 新製品ラインナップ

01 一般機器用 12W Wall Mount/ACピン取替式 / USBタイプ

02 医療用 12W Wall Mount/ACピン取替式 / USBタイプ
24/36/65W Wall Mount/ACピン取替式
90/120/160/200/250/300W デスクトップ型

03 オープンフレーム 62368-1適合 60335-1準拠モデル



New ideas



Adapter Technology Co., Ltd.



小型化医療基準



最新規格適合



大容量 パワーデリバリー



ROAD MAP

- 450W GaN FET窒化ガリウム ACアダプタ
- 50W~300W小型ACアダプタ
- 60W 2*3インチ情報用オープンフレーム
- 36W、60W、65W、90W、200WのミリタリーグレードACアダプタ
- 250W、300W ACアダプタ及び、302W DC/DC衛星用電源
- 450W AC-DC(56V/8.03A) / DC-DC(-48V) LEO (低軌道衛星) 電源
- 450W DC-DC (10.8V~30V) 海運運航用電源
- 600W パワーモジュールカスタム品
- 1400W オープンフレーム電源
- 90W、120W、300Wと450W 医療規格適合小型電源
- 36W医療用壁掛け式ACアダプタ

2021

2022

2023

2024

2025

- 1.2KW窒化ガリウム (GaN FET) オープンフレーム電源モジュール
- 衛星、自動販売機、プロッター、スプレー装置、その他用のカスタム電源開発、小型の600W オープンフレーム電源
- 窒化ガリウム (GaN FET) 120W、200W(医療)、250W(医療)、300W(医療)ACアダプタの量産開始

- 医療用60W&100W ACブレード交換式 TYPE-C PD ACアダプタ
- 医療用マルチ出力 1KW電源装置
- 500W プログラマブルチャージャー (I2C、調節可能CV/CC モード)

- 新シリーズ小型医療基準 12W、65W、160W、200Wと240W ACアダプタ
- 140W & 240W パワーデリバリ 3.1 仕様 USB Type C ACアダプタ
- 600W情報用/医療用3*5インチオープンフレーム電源 (ファン付き)
- 1KW オープンフレーム電源
- 2KW デジタル制御オープンフレーム電源

12W Series *I.T.E./Medical*



従来品寸法：
L 80.2 × W 46 × H 40.5(mm)

新製品品寸法：
L 59 × W 46 × H 40.5(mm)

Features :

- IEC/EN/ANSI/AAMI ES60601-1 (Edition 3.2)
- EMC : IEC60601-1-2 (Edition 4.1)
- IEC/EN/UL 62368-1 3rd Edition
- Means of Protection: 2 X MOPP
- 100-240VAC Universal Input
- Regulated Output With Low Ripple Noise
- Safety Agency Requirements and EMI/EMS Certified
- Modified and Custom Design Available
- 2 Years Warranty

Features :

- IEC/EN/UL 62368-1 3rd Edition
- 100-240VAC Universal Input
- Regulated Output With Low Ripple Noise
- Safety Agency Requirements and EMI/EMS Certified
- Modified and Custom Design Available
- 2 Years Warranty

Model	O/P Voltage	O/P Current	Watt
ATM012A4-W050V	5.00V	2.00A	10.00W
ATM012A4-W051V	5.00V	3.00A	15.00W
ATM012A4-W052V	5.10V	2.40A	12.24W
ATM012A4-W062V	6.20V	2.00A	12.40W
ATM012A4-W090V	9.00V	1.33A	11.97W
ATM012A4-W120V	12.00V	1.00A	12.00W
ATM012A4-W240V	24.00V	0.50A	12.00W



36W Series *Medical*



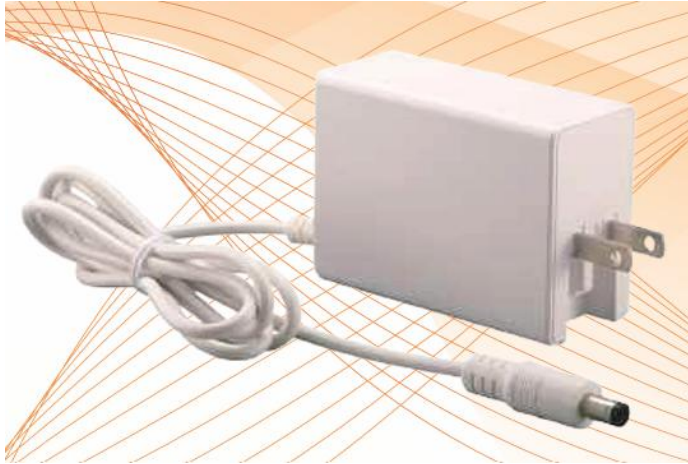
Features :

- IEC/EN/ANSI/AAMI ES60601-1 (Edition 3.2)
- EMC : IEC60601-1-2 (Edition 4.1)
- Means of Protection: 2 X MOPP
- 100-240VAC Universal Input
- Regulated Output With Low Ripple Noise
- Safety Agency Requirements and EMI/EMS Certified
- Modified and Custom Design Available
- 2 Years Warranty

Model	O/P Voltage	O/P Current	Watt
ATM036A4-W050□	5.0V	5.0A	25.0W
ATM036A4-W090□	9.0V	4.0A	36.0W
ATM036A4-W120□	12.0V	3.0A	36.0W
ATM036A4-W150□	15.0V	2.4A	36.0W
ATM036A4-W240□	24.0V	1.5A	36.0W



65W Series *Medical*



Features :

- IEC/EN/ANSI/AAMI ES60601-1 (Edition 3.2)
- EMC : IEC60601-1-2 (Edition 4.1)
- IEC/EN/UL 62368-1 3rd Edition
- Means of Protection: 2 X MOPP
- 100-240VAC Universal Input
- Regulated Output With Low Ripple Noise
- Safety Agency Requirements and EMI/EMS Certified
- Modified and Custom Design Available
- 2 Years Warranty



Model	O/P Voltage	O/P Current	Watt
ATM065A4-W120□	12.0V	5.00A	60W
ATM065A4-W150□	15.0V	4.34A	65W
ATM065A4-W190□	19.0V	3.43A	65W
ATM065A4-W240□	24.0V	2.71A	65W
ATM065A4-W480□	48.0V	1.36A	65W

90W Series *Medical*



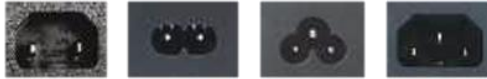
Features :

- IEC/EN/ANSI/AAMI ES60601-1 (Edition 3.2)
- EMC : IEC60601-1-2 (Edition 4.1)
- Means of Protection: 2 X MOPP
- 100-240VAC Universal Input
- Regulated Output With Low Ripple Noise
- Safety Agency Requirements and EMI/EMS Certified
- Modified and Custom Design Available
- 2 Years Warranty

Model	O/P Voltage	O/P Current	Watt
ATM090A4-□120	12.0V	7.50A	90.0W
ATM090A4-□150	15.0V	6.00A	90.0W
ATM090A4-□180	18.0V	5.00A	90.0W
ATM090A4-□190	19.0V	4.70A	89.3W
ATM090A4-□240	24.0V	3.75A	90.0W



120W Series *Medical*



Features :

- IEC/EN/ANSI/AAMI ES60601-1 (Edition 3.2)
- EMC : IEC60601-1-2 (Edition 4.1)
- Means of Protection: 2 X MOPP
- 100-240VAC Universal Input
- Regulated Output With Low Ripple Noise
- Safety Agency Requirements and EMI/EMS Certified
- Modified and Custom Design Available
- 2 Years Warranty

Model	O/P Voltage	O/P Current	Watt
ATM120A4-□120	12.0V	9.00A	108W
ATM120A4-□150	15.0V	8.00A	120W
ATM120A4-□180	18.0V	6.67A	120W
ATM120A4-□190	19.0V	6.30A	120W
ATM120A4-□240	24.0V	5.00A	120W

160W Series *Medical*



- Features :**
- IEC/EN/ANSI/AAMI ES60601-1 (Edition 3.2)
 - EMC : IEC60601-1-2 (Edition 4.1)
 - Means of Protection: 2 X MOPP
 - 100-240VAC Universal Input
 - Regulated Output With Low Ripple Noise
 - Safety Agency Requirements and EMI/EMS Certified
 - Modified and Custom Design Available
 - 2 Years Warranty



Model	O/P Voltage	O/P Current	Watt
ATM160A4-P120	12.0V	12.5A	150.0W
ATM160A4-P240	24.0V	6.6A	158.4W



200W Series *Medical*



Features :

- IEC/EN/ANSI/AAMI ES60601-1 (Edition 3.2)
- EMC : IEC60601-1-2 (Edition 4.1)
- Means of Protection: 2 X MOPP
- 100-240VAC Universal Input
- Regulated Output With Low Ripple Noise
- Safety Agency Requirements and EMI/EMS Certified
- Modified and Custom Design Available
- 2 Years Warranty



Model	O/P Voltage	O/P Current	Watt
ATM200A4-□120	12.0V	16.00A	192W
ATM200A4-□150	15.0V	13.33A	200W
ATM200A4-□190	19.0V	10.50A	200W
ATM200A4-□240	24.0V	8.30A	200W
ATM200A4-□250	25.0V	8.00A	200W
ATM200A4-□480	48.0V	4.17A	200W



300W Series *Medical*



Features :

- IEC/EN/ANSI/AAMI ES60601-1 (Edition 3.2)
- EMC : IEC60601-1-2 (Edition 4.1)
- Means of Protection: 2 X MOPP
- 100-240VAC Universal Input
- Regulated Output With Low Ripple Noise
- Safety Agency Requirements and EMI/EMS Certified
- Modified and Custom Design Available
- 2 Years Warranty



Model	O/P Voltage	O/P Current	Watt
ATM300A4-□120	12.0V	24.0A	288W
ATM300A4-□150	15.0V	20.0A	300W
ATM300A4-□240	24.0V	12.5A	300W



Thanks!

ご不明な点がございましたらお気軽にご連絡ください。

ai-on@aikoh-d.co.jp

TEL:03-3251-1335

<https://www.aikoh-d.co.jp/>

